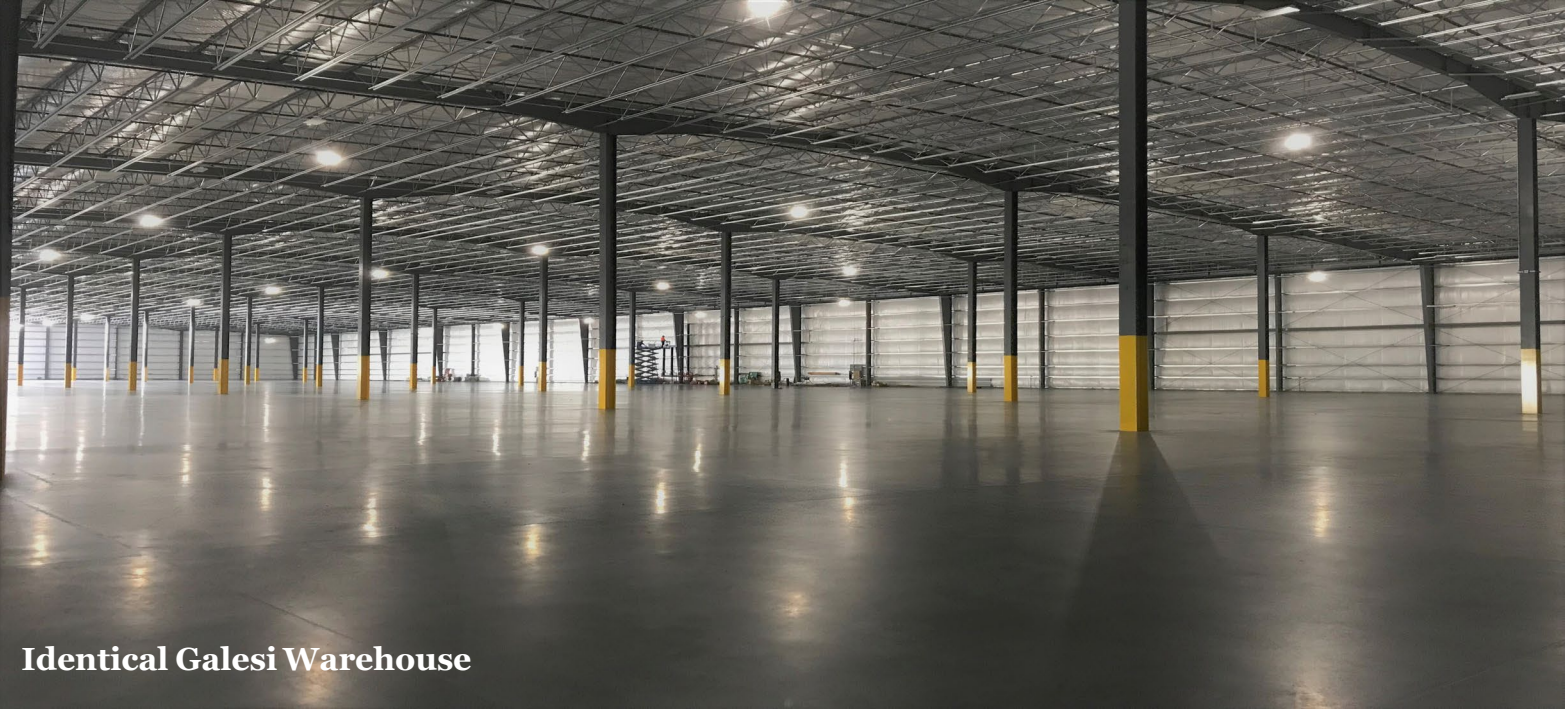




# Rotterdam Corporate Park ~ Building 17 Town of Rotterdam, Schenectady County, NY



Identical Galesi Warehouse

**AVAILABLE OCTOBER 2021**

<b>TOTAL BUILDING SIZE:</b>	<b>200,000 Square Foot Pre-Engineered Metal Building</b>
<b>COLUMNS:</b>	<b>50' x 50'</b>
<b>CEILING HEIGHTS:</b>	<b>32' Clear</b>
<b>DOCK DOORS:</b>	<b>14 ~ 9' x 10' w/Pit Levelers, Truck Restraints, Dock Seals, Swing Lights</b>
<b>LIGHTING:</b>	<b>LED High Bay - 400W equivalent</b>
<b>HEAT:</b>	<b>Cambridge Gas Fired Heater</b>
<b>FLOORS:</b>	<b>8" Polished Concrete Floor</b>
<b>FIRE SUPPRESSION:</b>	<b>Early Suppression Fast Response (ESFR)</b>
<b>WATER &amp; SEWER:</b>	<b>Town of Rotterdam: Water - 10" Sewer - 6"</b>
<b>GAS &amp; ELECTRIC:</b>	<b>National Grid: Industrial Service Based Upon Need</b>
<b>PARKING:</b>	<b>300+</b>
<b>PARK AMENITIES:</b>	<b>Full-Time, On-Site Maintenance Crew; Fenced Perimeter with 24/7 Security; On-Site Day Care</b>

## Industrial Real Estate Division

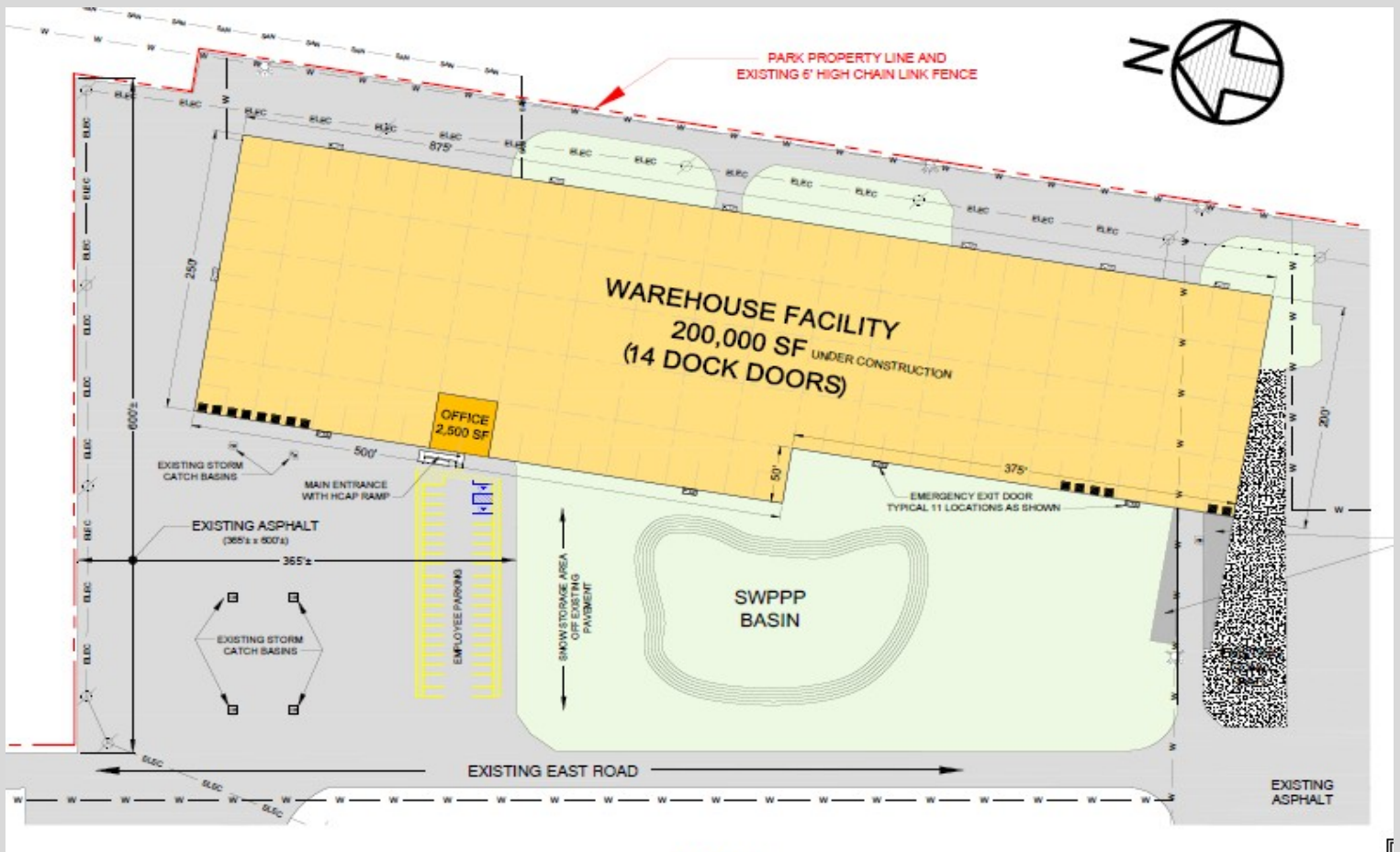
**David Ahl,**  
[DAhl@galesi.com](mailto:DAhl@galesi.com)

**Shannon Muth**  
[SMuth@galesi.com](mailto:SMuth@galesi.com)

**518.356.4445**  
[www.galesi.com](http://www.galesi.com)



# Rotterdam Corporate Park ~ Building 17 Town of Rotterdam, Schenectady County, NY



## Industrial Real Estate Division

David Ahl,  
[DAhl@galesi.com](mailto:DAhl@galesi.com)

Shannon Muth  
[SMuth@galesi.com](mailto:SMuth@galesi.com)

518.356.4445  
[www.galesi.com](http://www.galesi.com)